

## Company Background



M & S Consultants Pty Ltd is a Territory owned company which has been operating in Darwin since October 2003. The directors of the company are Michael and Suzanne Wilson (husband and wife - above) who have lived in the Territory since 1999.

Both Michael and Suzanne are passionate about developing and delivering innovative and flexible client solutions.

Both love living in the Northern Territory and understand the tyranny of distance so often faced by people living and working in the regional and remote areas of the NT.

Of particular interest to them is the School of the Air - the 'largest classroom in the world', with its special needs for educating children 'over the air' without the ability for children to attend a conventional classroom.

Hence the development of REACT....

## Towards 2006

REACT is the preferred software of the Department of Employment Education & Training in the Northern Territory in the provision of Interactive Distance Learning (IDL).

As from January 2006, REACT will be used to deliver IDL to students via the 'School of the Air' to students living in remote and regional areas of the NT.



Email: REACT@DarwinNT.biz

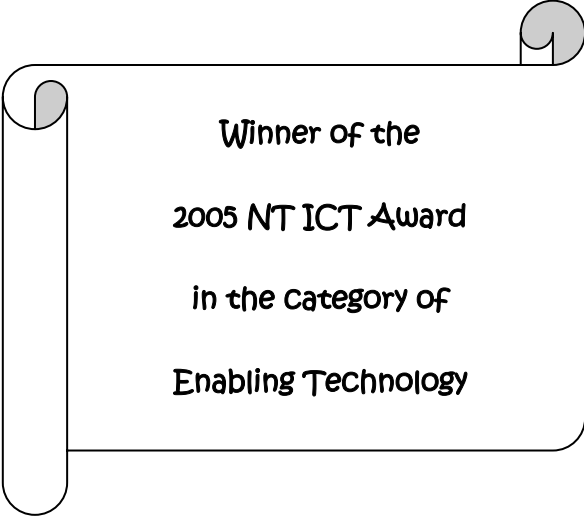


Tel: 08 8941 1687  
Mob: 0412 223 611 (Michael)



# REACT

## Remote Education and Conferencing Tool



## Product & Service Information

# Introducing REACT

Educating people generally and children specifically in remote locations is very challenging for the children, their families and their teachers and has become an increasing focus for researchers.

## Sense of Community

It has often been noted that learning at a distance makes it difficult to form a 'Sense of Community' amongst

participants so that they do not feel removed from activities or working alone.

In this particularly challenging learning environment, how do learners and facilitators in

a virtual classroom build and sustain a 'Sense of Community'?



## Bridging the Gap

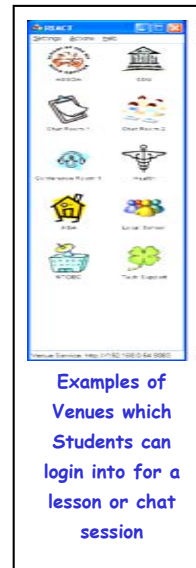
M & S Consultants Pty Ltd felt that there was a need for a flexible way of bridging distances and providing a high quality interactive means of communication.

This has resulted in the development of REACT - Remote Education and Conferencing Tool.

This New Age software program permits interactive distance learning and conferencing to be conducted almost anywhere, anytime irrespective of geographic location.

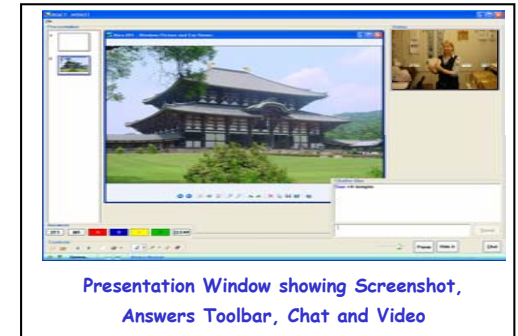
Designed to be used over a variety of communication transports, REACT is optimised for operation over satellite infrastructure which is often the basis for remote communications.

REACT works over Optus satellite, Telstra satellite, internet, ADSL and MPLS Wide Area Networks and can be tailored to operate over most network architectures.



## Capabilities of REACT

The software provides the tools to permit the development of a 'Sense of Community' through a range of flexible capabilities now at the fingertips of teachers.



This will provide teachers and students with learning options limited only by their imagination.

Some of the tools which all participants in a lesson can share are:

- PowerPoint
- Audio/Video
- Chat
- Desktop Sharing
- Popup & Flag Q & A
- File Transfers
- Internet Browser Sharing
- Inserting Screenshots
- Inking & Whiteboard
- Playing of Windows Media Files
- Recording/Replaying of Presentations

Enquiries to: [REACT@DarwinNT.biz](mailto:REACT@DarwinNT.biz)