



Interested in using Microsoft SharePoint to store, find and share your Microsoft Outlook messages? Looking for a better way to save and retrieve email messages in SharePoint directly from Microsoft Outlook? WISDOM Message makes Microsoft SharePoint both easy-to-use and highly effective for managing Outlook messages and their attachments.



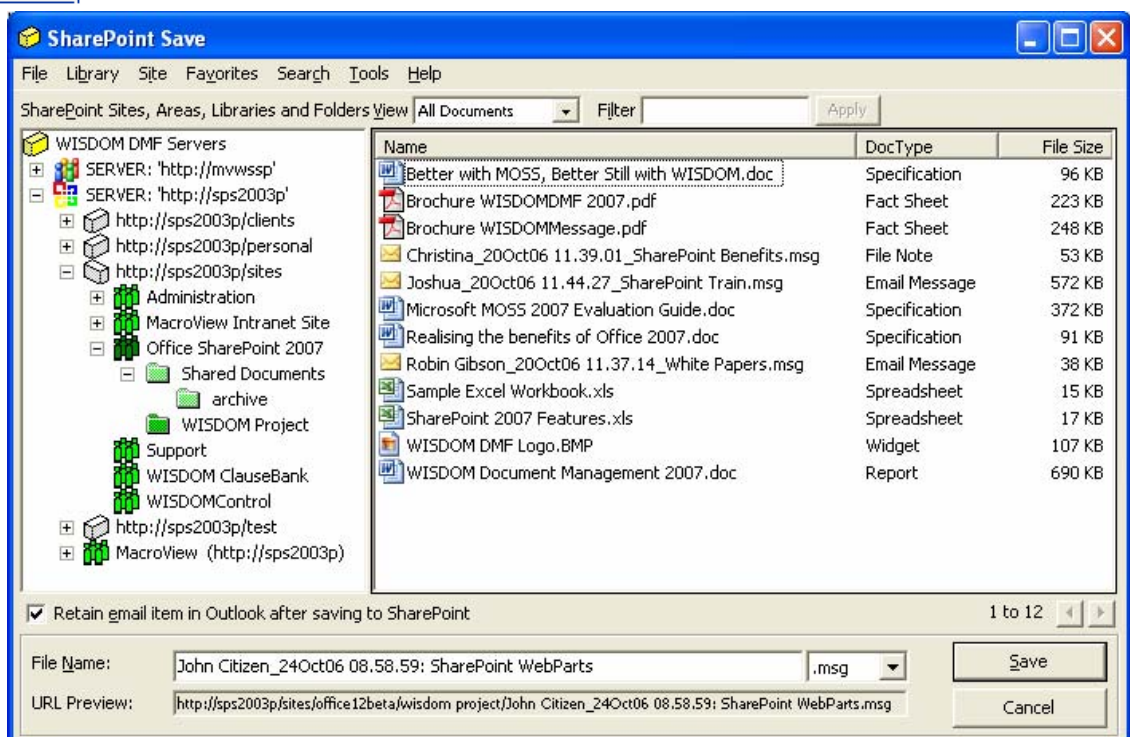
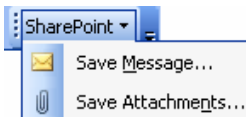
- Today, email messages and their attachments are a major source of information in most organisations. The problem is that this information is difficult to share if it remains in personal InBoxes and OutBoxes.
- With its document libraries, Microsoft SharePoint provides a web-based store for documents and files. By extending the integration with Microsoft Outlook, WISDOM Message makes SharePoint a convenient and effective store for your email messages. WISDOM supports saving, retrieving, moving, renaming and deleting email messages and their attached files. WISDOM also assists with searching for messages stored in SharePoint .

Works in Microsoft Outlook



Drag-and-drop to save messages to SharePoint, even while Outlook is running in Offline mode.

- With WISDOM Message you simply drag-and-drop a message in Outlook to save it to your favorite document libraries and folders in SharePoint.
- You can drag and drop messages to your favorite SharePoint locations even when Outlook is Offline, or you are using Outlook Web Access.
- WISDOM Message also provides an intuitive tree-view display of your complete SharePoint environment, directly from within Microsoft Outlook. This WISDOM tree-view will display all parts of a SharePoint environment, including Windows SharePoint Services and Portal Server servers, Portal Server areas and Personal sites. Access permissions are strictly observed.
- WISDOM remembers the most recently selected SharePoint location and allows frequently used sites, libraries and folders to be set as Favorites.
- Clicking on the name of a message in a document library or folder within the WISDOM Message display opens the message in Outlook, just as it was when it was originally saved. Any attachments will still be present.



WISDOM Message streamlines saving messages from Outlook to SharePoint

Saving and Managing Outlook Messages



WISDOM makes Microsoft SharePoint a viable alternative to Exchange Public Folders as an email message store.

- As it saves to SharePoint, WISDOM will automatically use the attributes of the Outlook message to set values of custom document library columns such as To, From, SentOn, ReceivedTime, Attach Count etc. As part of the WISDOM installation MacroView supplies document library templates that contain these special Outlook meta-data columns.
- WISDOM also helps out with naming of the MSG files that it creates when saving an Outlook message. These file names are automatically created based on a pattern chosen by your organization – e.g. a combination of Sender, Sent date/time and Subject. The end result is that Outlook messages saved with WISDOM are displayed in SharePoint much as they would be in an Exchange Public Folder, InBox or Sent box. They can be sorted, filtered and searched for using standard SharePoint techniques.
- WISDOM Message can be configured so that you are prompted to save to SharePoint each time you send a message. WISDOM lets you save multiple messages to SharePoint simultaneously, and provides an option to delete messages from Outlook once they are saved to SharePoint.
- WISDOM Explorer for SharePoint makes it easy to rename and/or delete Outlook messages that are stored in SharePoint and to move or copy message files from one SharePoint document library or folder to another.

Great Support for Attachments and Searching



WISDOM wins People's Choice award for SharePoint document management

- Ever wanted to detach files from an incoming message and save them to SharePoint or to retrieve files from SharePoint to attach to a new email message? WISDOM makes it easy to move attachment files to and from SharePoint and allows files to be inserted as links rather than copies.
- WISDOM makes searching for messages using SharePoint more successful by recording additional meta-data for each message as it is saved to SharePoint. This is similar to the way Word 2003 prompts for custom columns in document libraries, but much smarter because WISDOM allows the user to select valid meta-data values from searchable drop-down lists, which can be populated from a list on a central SharePoint site or from an existing database (such as a CRM or Client-Matter system).

"Since email has become the most common method of written communication in our office, there has been an increasing need to file and retrieve project related email information easily and efficiently. WISDOM Message provides the necessary tools to make SharePoint a viable solution. There is no better product available that enables Outlook to communicate properly with SharePoint than WISDOM Message."

Michael Auschrat, IT / CAD Manager, Cohos Evamy, Canada

Technical Details

- Behind the scenes WISDOM Message uses .Net Web services and XML to enhance the integration of Microsoft Outlook with Microsoft SharePoint.

Technical Requirements	User PCs:	WISDOMdmf.dll – licenced from MacroView; Microsoft Outlook 2002 or later; Internet Explorer 6.x (or later). Microsoft XML 4.0; Microsoft SOAP 3.0 (supplied by MacroView).
	Server:	MessageServer.asmx (.Net XML web service) – licenced from MacroView Windows 2003 Server with Windows SharePoint Services.
	Database:	Microsoft SQL Server must be installed on or be accessible from the SharePoint server. Windows MSDE and SQL Server 2005 Express Edition can also be used.

For more information about WISDOM solutions, contact:

MacroView
Business Technology Pty Ltd
ACN 081 117 777
ABN 29 081 117 777

Level 12,
171 Clarence Street
Sydney NSW 2000
Australia

Correspondence:
GPO Box 5149
Sydney NSW 2001
Australia

T: +61 2 9249 2700
F: +61 2 9279 4111
E: info@macroview.com.au
www.macroview.com.au

